

## INFECTION PREVENTION CHECKLIST

Pre/Post Op	What?	Who?	How? (Frequency, contact time)
<input type="checkbox"/>	Surface Wipes		
<input type="checkbox"/>	Hand Sanitizer		
<input type="checkbox"/>	Deodorizer		
<input type="checkbox"/>	Hand Soap/Lotion		
Procedure Rooms	What?	Who?	How? (Frequency, contact time)
<input type="checkbox"/>	Surface Disinfectant (wipes/liquid)		
<input type="checkbox"/>	Hand Sanitizer		
<input type="checkbox"/>	Deodorizer		
<input type="checkbox"/>	Hand Soap/Lotion		
<input type="checkbox"/>	Enzymatic		
<input type="checkbox"/>	Liquid Medical Waste		
<input type="checkbox"/>	Eye Protection		
Instrument Reprocessing	What?	Who?	How? (Frequency, contact time)
<input type="checkbox"/>	Surface Disinfectant (wipes/liquid)		
<input type="checkbox"/>	Hand Sanitizer		
<input type="checkbox"/>	Deodorizer		
<input type="checkbox"/>	Hand Soap/Lotion		
<input type="checkbox"/>	Enzymatics and Detergents		
<input type="checkbox"/>	High Level Disinfectants/Test Strips		
<input type="checkbox"/>	Eye Protection		
Common Areas (Waiting Rooms/Hallways)	What?	Who?	How? (Frequency, contact time)
<input type="checkbox"/>	Surface Wipes		
<input type="checkbox"/>	Hand Sanitizer		
Medical Equipment	What?	Who?	How? (Frequency, contact time)
<input type="checkbox"/>	Surface Wipes		
Nurse Stations	What?	Who?	How? (Frequency, contact time)
<input type="checkbox"/>	Surface Wipes		
<input type="checkbox"/>	Hand Sanitizer		
<input type="checkbox"/>	Hand Soap/Lotion		
Restrooms	What?	Who?	How? (Frequency, contact time)
<input type="checkbox"/>	Hand Sanitizer		
<input type="checkbox"/>	Hand Soap/Lotion		

## ORDERING INFORMATION

### CaviWipes<sup>1</sup>

13-5100	160 count (6" x 6.75")	12 canisters/case
13-5150	65 count (9" x 12")	12 canisters/case
13-5155	Singles, 50 count (9" x 12")	6 boxes/case
13-5224	Flat Pack, 45 count (7" x 9")	20 packs per case
13-1175	Canister Wall Bracket	12 brackets/case
13-1185	Flat Pack Wall Mount	20 mounts/case

### CaviWipes<sup>TM</sup>

13-1100	160 count (6" x 6.75")	12 canisters/case
13-1150	65 count (9" x 12")	12 canisters/case
10-1090	220 count (9" x 12")	12 canisters/case
13-1155	XL Singles, 50 count (9" x 12")	6 boxes/case

13-1175	Canister Wall Bracket	12 brackets/case
13-1224	Flat Pack, 45 count	20 packs/case
13-1185	Flat Pack Wall Mount	20 mounts/case

### CaviWipes<sup>TM</sup> Bleach

13-9100	90 count	12 canisters/case
---------	----------	-------------------

### CaviCide<sup>1</sup>

13-5024	24 ounce spray	12 bottles/case
13-5000	1 gallon	4 bottles/case
13-5025	2.5 gallon	2 bottles/case
13-5055	55 gallon	1 drum

### CaviCide<sup>TM</sup>

13-1024	24 fluid ounce spray	12 bottles/case
13-1000	1 gallon	4 bottles/case
13-1025	2.5 gallon	2 bottles/case
13-1055	55 gallon	1 drum

### EmPower<sup>TM</sup> Foam

10-4224	24 fluid ounce spray	12 bottles/case
---------	----------------------	-----------------

### EmPower<sup>TM</sup>

10-4100	1 gallon	4 bottles/case
10-4150	5 gallon	1 drum
10-4130	30 gallon	1 drum

### EmPower<sup>TM</sup> Fragrance Free

10-4400	1 gallon	4 bottles/case
---------	----------	----------------

### MetriZyme<sup>TM</sup>

10-4005	1 quart	4 bottles/case
10-4010	1/2 gallon	4 bottles/case
10-4000	1 gallon	4 bottles/case

### MetriSponge<sup>TM</sup>

10-4025	25 sponges/box	4 boxes/case
---------	----------------	--------------

### MetriWash<sup>TM</sup>

10-3300	1 gallon	4 bottles/case
10-3330	30 gallon	1 drum

### MetriClean<sup>2</sup>

10-8100	1 gallon	4 bottles/case
---------	----------	----------------

### MetriLube<sup>TM</sup>

10-3425	24 fluid ounce	12 bottles/case
10-3400	1 gallon	4 bottles/case

### MetriShine<sup>TM</sup>

10-9300	1 gallon	4 bottles/case
---------	----------	----------------

### MetriCide<sup>TM</sup> OPA Plus Solution & Test Strips

10-6000	1 gallon	4 bottles/case
10-602	100 Strips	2 bottles/case

### MetriCide<sup>TM</sup> 28

10-2805	1 quart	16 bottles/case
10-2800	1 gallon	4 bottles/case
10-304	MetriTest Strips 1.8% - 60 strips	2 bottles/case

### MetriCide<sup>TM</sup> Plus 30

10-3200	1 gallon	4 bottles/case
10-304	MetriTest Strips 1.8% - 60 strips	2 bottles/case

### VioNexus<sup>TM</sup> Antimicrobial Foaming Soap

10-1900	1 liter	6 bottles/case
---------	---------	----------------

### VioNexus<sup>TM</sup> Foaming Soap with Vitamin E

10-2001	1 liter	6 bottles/case
---------	---------	----------------

### VioNexus<sup>TM</sup> No-Rinse Spray

10-1800	1 liter	6 bottles/case
---------	---------	----------------

### VioNex<sup>TM</sup>

10-1500	1 gallon refill	4 bottles/case
10-1504	4 fluid ounce flip top	24 bottles/case
10-1518	18 fluid ounce w/ pump	12 bottles/case

### The Solidifier<sup>TM</sup>

SD500	Solidifies up to 500 cc	64 bottles/case
SD1200	Solidifies up to 1,200 cc	64 bottles/case
SD1500	Solidifies up to 1,500 cc	64 bottles/case
SD2000	Solidifies up to 2,000 cc	64 bottles/case
SD3000	Solidifies up to 3,000 cc	64 bottles/case
SD16000	Solidifies up to 16,000 cc	20 bottles/case

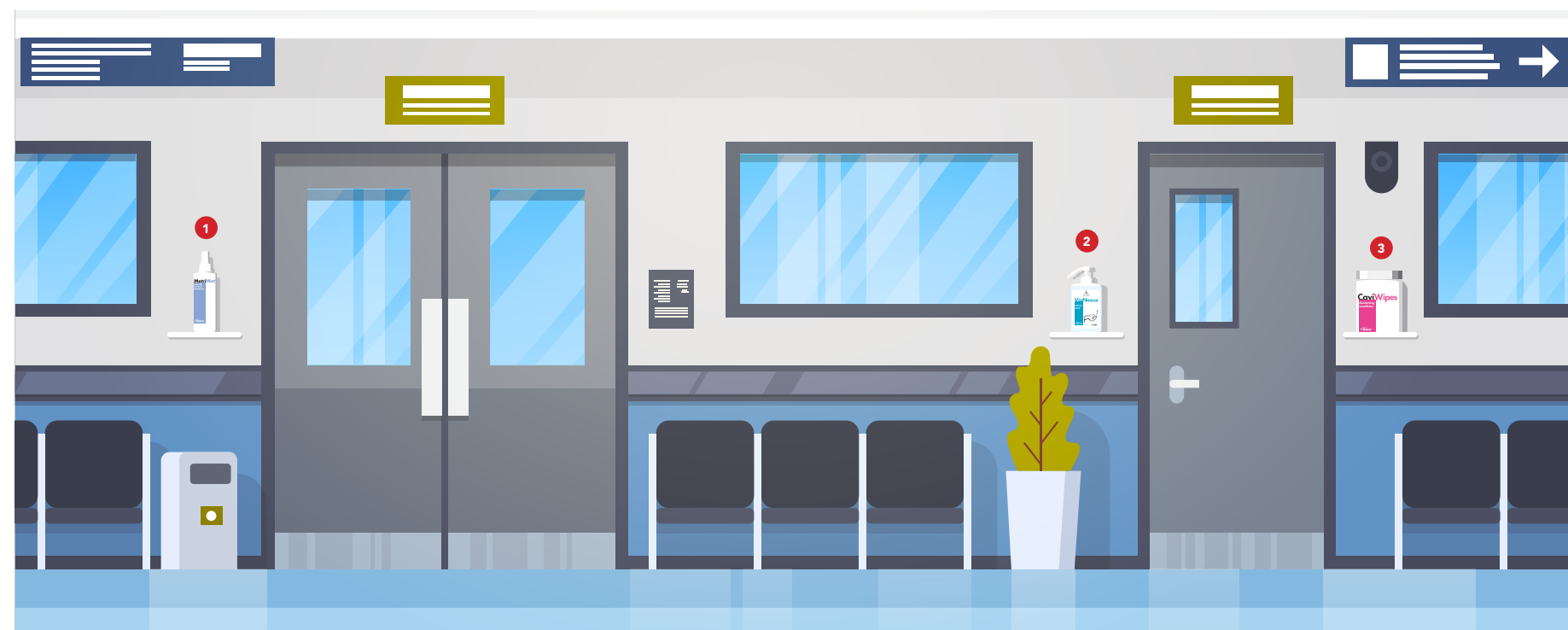
### Canister Express<sup>TM</sup>

PG50-5057	Solidifies up to 500 cc	64 bottles/case
PG50-5054	Solidifies up to 1,200 cc	64 bottles/case
PG50-5053	Solidifies up to 1,500 cc	64 bottles/case
PG50-5055	Solidifies up to 2,000 cc	64 bottles/case
PG50-5056	Solidifies up to 3,000 cc	64 bottles/case



A SYSTEM OF SOLUTIONS TO PREVENT INFECTIONS IN YOUR SURGERY CENTER

HALLWAY



- 1  
**AIR DEODORIZER**  


---

 MetriMist
- 2  
**HAND HYGIENE**  


---

 VioNexus Foaming Soap w/ Vitamin E  
 VioNexus No Rinse Spray  
 VioNex Antimicrobial Liquid Soap
- 3  
**SURFACE DISINFECTANTS**  


---

 CaviWipes | CaviCide  
 CaviWipes1 | CaviCide1  
 CaviWipes Bleach
- 4  
**LIQUID MEDICAL WASTE**  


---

 The Solidifer  
 Canister Express

OPERATING ROOM



- 5  
**HIGH-LEVEL DISINFECTANTS**  


---

 MetriCide  
 MetriCide 28  
 MetriCide Plus 30  
 MetriCide OPA Plus
- 6  
**INSTRUMENT REPROCESSING**  


---

 MetriZyme  
 MetriClean2  
 MetriWash  
 EmPower
- 7  
**INSTRUMENT LUBRICANT & DESCALER**  


---

 MetriLube  
 MetriShine
- 8  
**POINT-OF-USE PRE-CLEANING**  


---

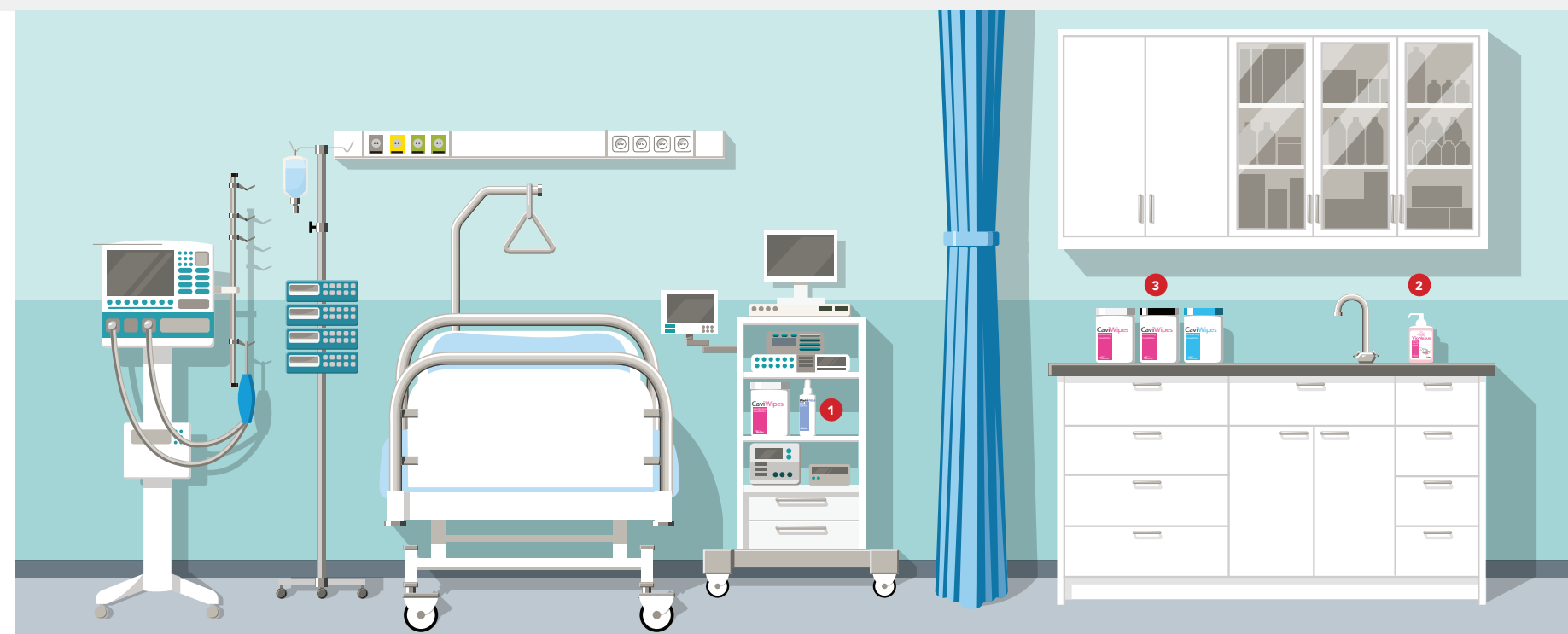
 MetriSponge  
 EmPower Foam

Operating Room Quick Tips<sup>1</sup>:

- Always clean from top to bottom (clean to dirty)
- Do not use any spray or mist\*
- Clean before disinfect - soil and dirt can be a barrier stopping the disinfectant from working to kill germs on the surface

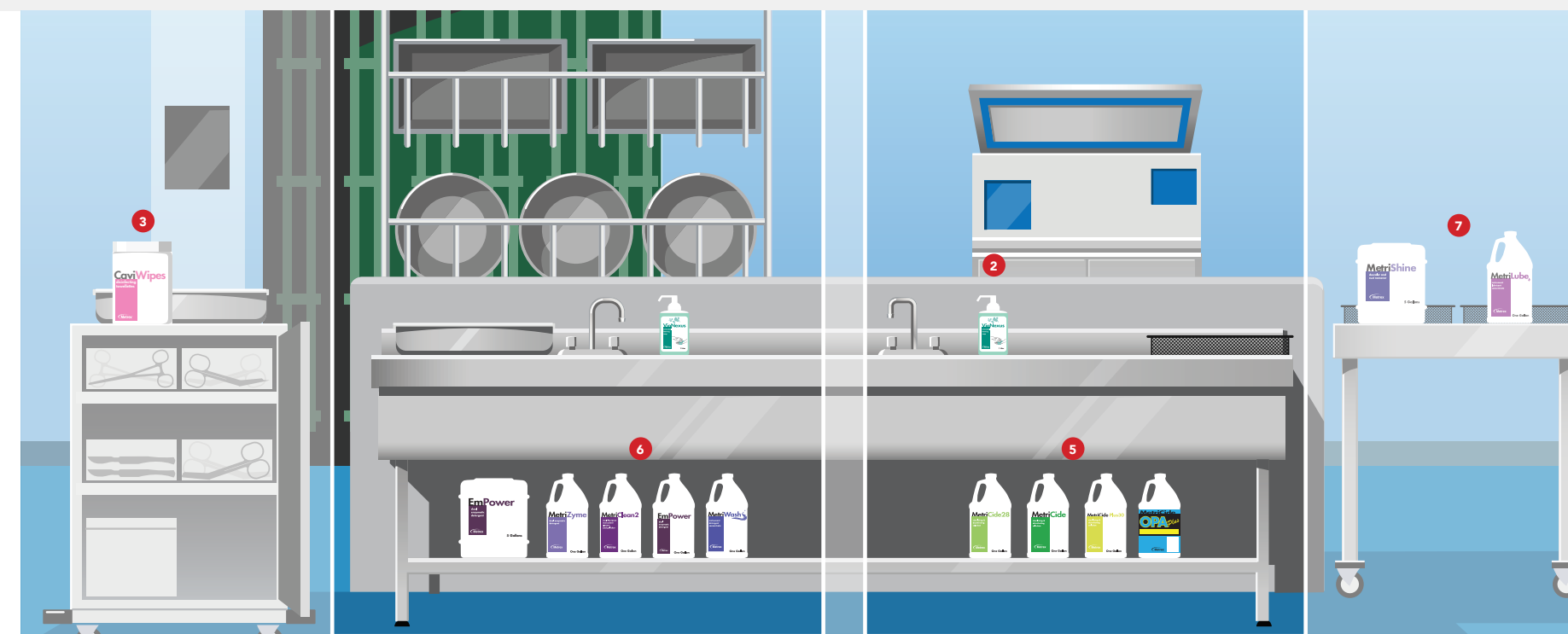
\*CaviCide & CaviCide1 are available in 55 gallon drums and maybe used with microfiber cloths for cost savings in the OR

PRE-OP POST-OP ROOM



**References**  
 1. Recommended practices for environmental cleaning. In: Perioperative Standards and Recommended Practices. Denver, CO: AORN, Inc; 2014:255-276.  
 2. CMS Letter. <https://www.cms.gov/Medicare/Provider-Enrollment-and-Certification/SurveyCertificationGenInfo/Downloads/Survey-and-Cert-Letter-15-32.pdf>. April 2015.  
 3. American National Standard. ANSI/AAMI ST91 <http://na.scecm.com.br/2014/wp-content/uploads/2015/09/ANSI-AAMI-ST91-Endoscopy-2015.pdf>. 2015.

REPROCESSING ROOM



Reprocessing Workflow<sup>2</sup>:

1. Point-of-Use (Operating Room)  
*Treatment of gross debris at the site<sup>2</sup>*
2. Transportation  
*From OR to Reprocessing Area*
3. Preparation for cleaning  
*Manual or Automated*
4. Inspection
5. Sterilization
6. Storage