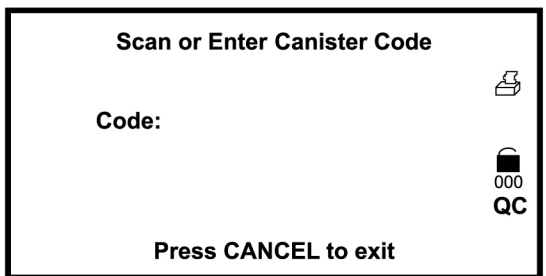


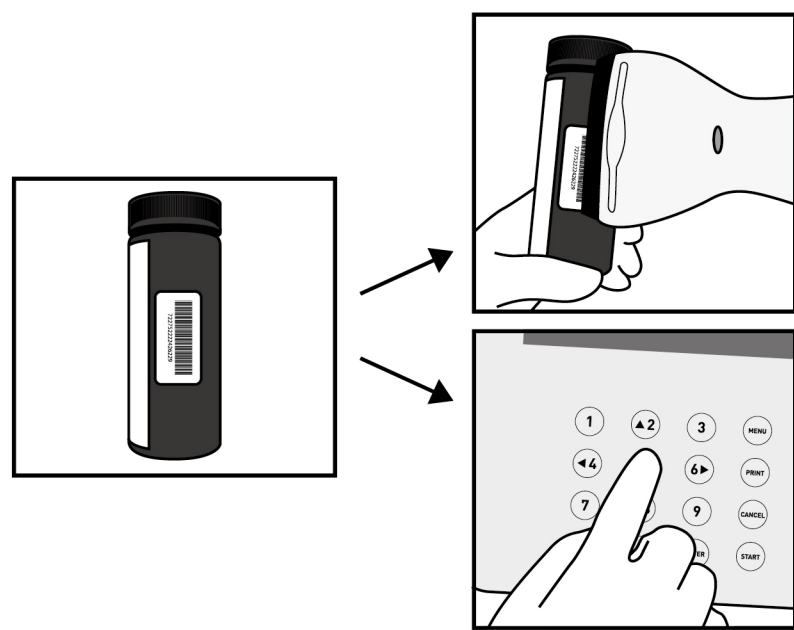
Entering Canister Code

Prior to your first test or when a new canister of strips is required, the analyzer will request that a canister code is entered from the new canister. The code can be entered manually from the keypad, or scanned with the Barcode reader, if installed.

The first time the analyzer is started, the Strip Holder will fully extend and the screen below will be displayed.

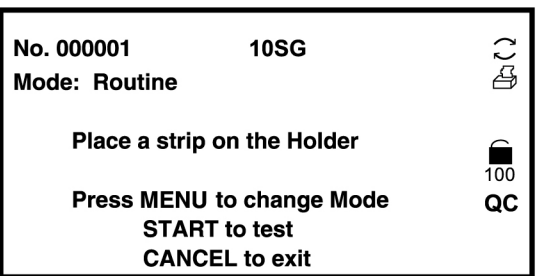


Scan or manually enter the canister code from the strip canister.

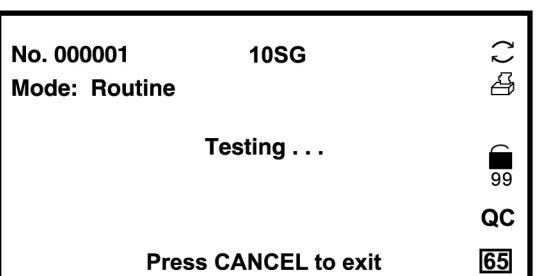


Begin Testing

Press **START** again to show the testing screen. A timer will show in the lower right of the screen, beginning at **65** seconds. Dip a new strip into the urine sample to be tested. Drain excess sample from the strip and place it on the Strip Holder when the timer reaches **62**.



A triple beep will be heard. The test strip will remain on the strip carrier until it is moved into the analyzer. The strip pads are read and the results displayed. The Strip Holder returns the strip to the extended position. The strip can then be removed and a new sample analyzed.

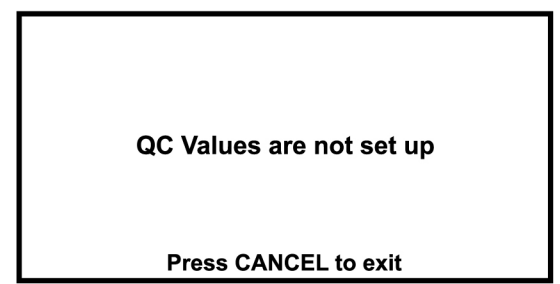


Use only Pro Advantage® Urine Reagent Strips with the analyzer.

Running a QC Test

Select **Run QC Test** and press **ENTER** to perform a QC test according to your standard operating procedures (SOPs).

When a QC test is run for the first time, the analyzer will show the screen below if QC values have not been set up.



Setting the QC Values

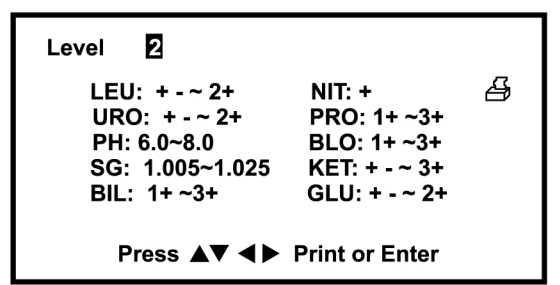
From the Initial Screen, enter the passcode 420024 to show the QC value setup screen.

Press **▲** or **▼** to change the highlighted digit. Press **◀** or **▶** to move to the digit to be changed. Press **▲** or **▼** to increase or decrease the value. Change each of the analytes QC values in this manner until the desired values are shown.

Press **ENTER** to save the changes and exit the screen. Press **PRINT** to print the current values.

Note: Please set up the QC values, according to the urine control expected values.

The QC set-up screen recognizes only arbitrary values.



Refer to the Instruction Manual for more advanced processing and settings.



Urine Analyzer and Urine Reagent Strips

Quick Start Guide



Manufactured in China for: NDC, Inc.
407 New Sanford Rd., La Vergne, TN 37086
www.ProAdvantagebyNDC.com

DN : 1150942701
Eff.Date : 2017-08-23

Rx only
For *in-vitro* diagnostic use only

Quick Start Guide

Place the analyzer on a level surface. Allow 80x50 cm on all sides of the analyzer for access.

Plug the power cord into a power outlet, then press the power switch located on the back panel of the analyzer to turn on the Pro Advantage® Urine Analyzer. The analyzer will run a self-test. With no strip holder installed, the self-test will fail indicating “Optical Sensor Failed”. The Strip Mount will be extended. Turn the analyzer off.

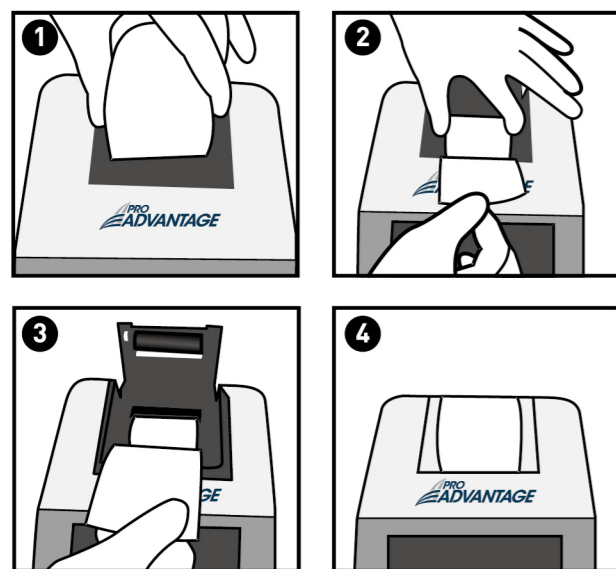
Install Printer Paper

Open the printer cover by pulling up on the tab.

Place the new paper roll into the printer paper compartment with the paper unrolling from underneath and towards the compartment wall.

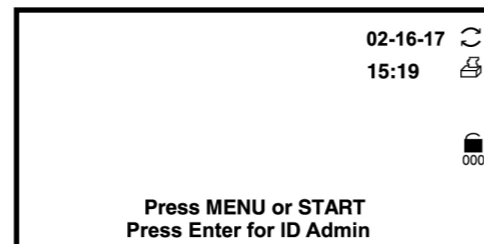
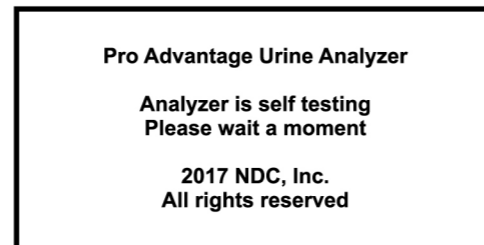
Pull about 4 inches or 10 cm of paper past the top edge of the paper compartment.

Note: Do not feed paper underneath the paper roller. Close the printer paper compartment by clicking the cover back into its original position. Press the printer cover after you close the cover to ensure that it is closed properly.



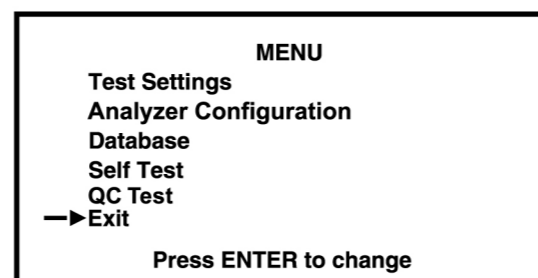
Power up Analyzer

Turn the **Power Switch** on. The Self-Test will be run again with **Strip Holder Mount** retracted. The Initial Screen will be displayed. Press **MENU** to show the **Menu** screen to configure the analyzer.



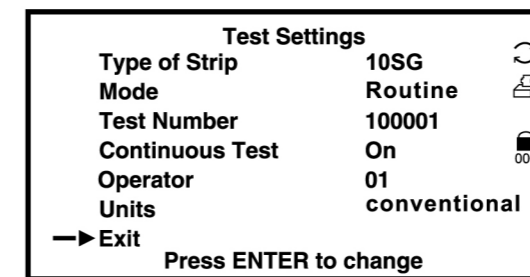
Configure Analyzer

Select options by pressing **▲** or **▼** until the Selection Arrow (**→**) is next to the option. Press **Enter** to show the options in a new screen or cycle through the settings as listed below. Select **Exit** and press **Enter** to return to the Initial Screen.



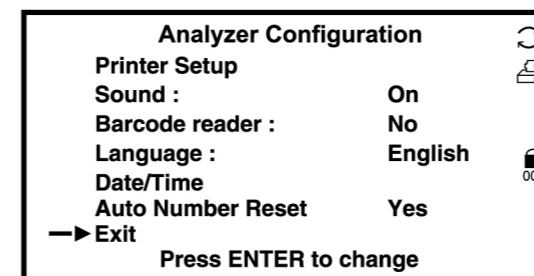
Select Type of Strip

Select **Type of Strip** and press **ENTER** to change the strip type. Each strip type defines the number of test parameters per strip, in this case 10 parameters. Each press of the **ENTER** key cycles through all options. Press **ENTER** until **Type of Strip** matches the strips to be used.



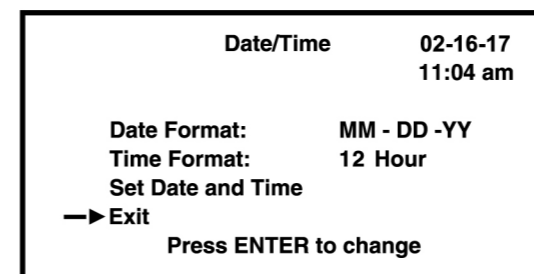
Select Units

Select **Units** and press **ENTER** to select either **Conventional** or **SI** units. Select **Exit** and press **ENTER**. Select **Analyzer Configuration** and press **ENTER**.

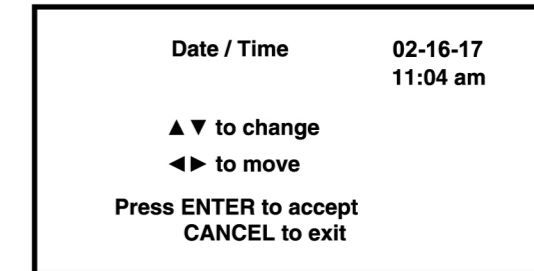


Set Date/Time

Select **Date/Time** to show the Date/Time menu. Selecting **Date Format** and **Time Format** then pressing **ENTER** will cycle these selections through the available options. Select the proper format.



Select **Set Date and Time** and press **ENTER**. Follow on-screen directions to set the current time and date. Press **ENTER** to accept the changes and exit the screen. Press **ENTER** again to exit the Date/Time menu.



Barcode Reader (Optional)

If no Barcode Reader is present, leave this selection at **No**. If Barcode reader is present, set this setting to **Yes**. Refer to the detailed instructions in the Instruction Manual for installing and configuring the optional Barcode reader. Press **ENTER** again to exit the Date/Time menu.

Sound

Select **Sound** and press **ENTER** to cycle through the audio options. Leave this setting at **On** for all audio prompts and indications.

Printer Setup

Select **Printer Setup** and press **ENTER** to show the **Printer Setup** screen. Select **Select Printer** and press **ENTER** to cycle through **Internal** or **External** options. Leave at **Internal** to use the internal printer.

Select **Auto-Print** and press **ENTER** to cycle through Auto-Print **Off** or **On**. Leave at **On** to automatically print all results.

Select **Print Copies** and press **ENTER** to select the number of copies to print, from 1 to 3.

Select **Exit** and press **ENTER** to exit this screen.

Select **Exit** and press **ENTER** to return to the Menu screen.

This completes analyzer setup functions. Select **Exit** and press **ENTER** to return to the Initial Screen.

